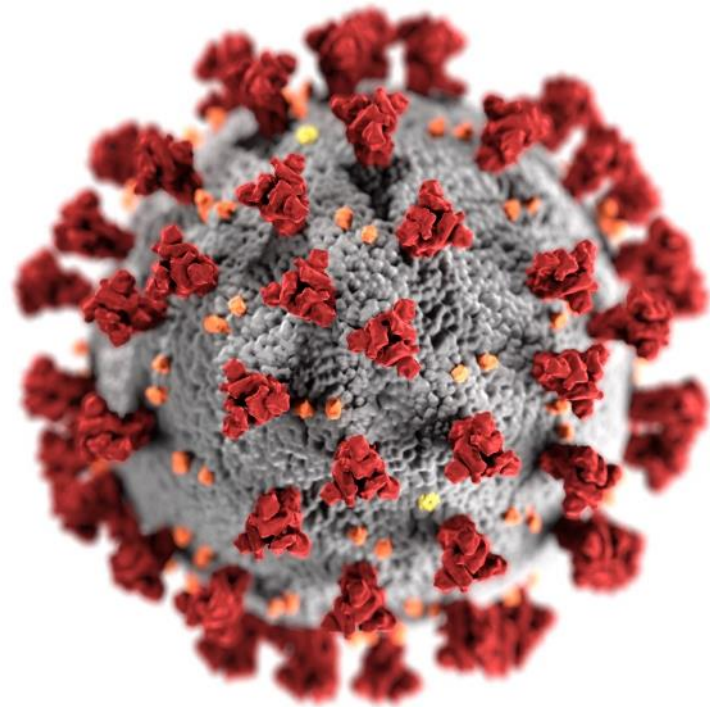


Operational Considerations for the Management of Visitors in Non-US Healthcare Facilities

Carolyn Herzig, PhD, MS
Epidemiologist
US Centers for Disease Control and Prevention
International Infection Control Program

Global Webinar Series
2 July 2020



cdc.gov/coronavirus

Disclosures

I have no financial relationships with commercial entities producing healthcare related products and/or services.

Objectives

- Describe the goals of visitor management
- Describe visitor management strategies to limit the introduction of COVID-19 into healthcare facilities
- Describe strategies when visitors are essential to providing patient care

Goals of Visitor Management

- Minimize the risk of SARS-CoV-2 transmission to visitors of patients with suspected or confirmed COVID-19
- Minimize the risk of visitors introducing SARS-CoV-2 into healthcare facilities
 - This risk increases as community transmission becomes widespread



Limit All Visitors during the COVID-19 Pandemic



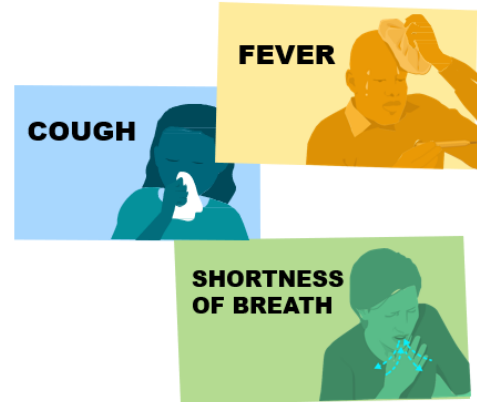
If Visitors are Allowed

- Place visual alerts at facility entrances and other strategic areas
- Instruct visitors with fever or respiratory symptoms to leave the facility



VISITORS

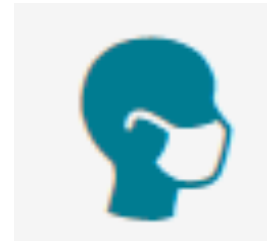
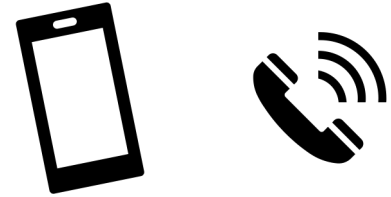
DO NOT enter the health facility if you have any respiratory symptoms, including:



If you have symptoms, notify your healthcare provider or public health officials immediately by calling: _____

If Visitors are Allowed

- Designate an entrance for visitors
- Educate visitors on hand hygiene practices, respiratory hygiene, and cough etiquette
- Use alternatives to direct interactions between visitors and patients
- Follow national policies regarding the use of medical masks or face covers by visitors
- Restrict visits to high-risk patients



Considerations during Community Transmission of COVID-19



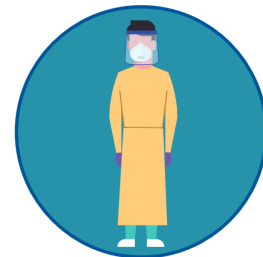
Allow Only Visitors or Caregivers Essential to Providing Patient Care

- Restrict visitor access to healthcare facilities
- Limit the number of essential visitors or caregivers to one per patient
- Actively screen all visitors or caregivers
- Consider requiring that all visitors or caregivers wear a medical mask or face cover, according to national policies



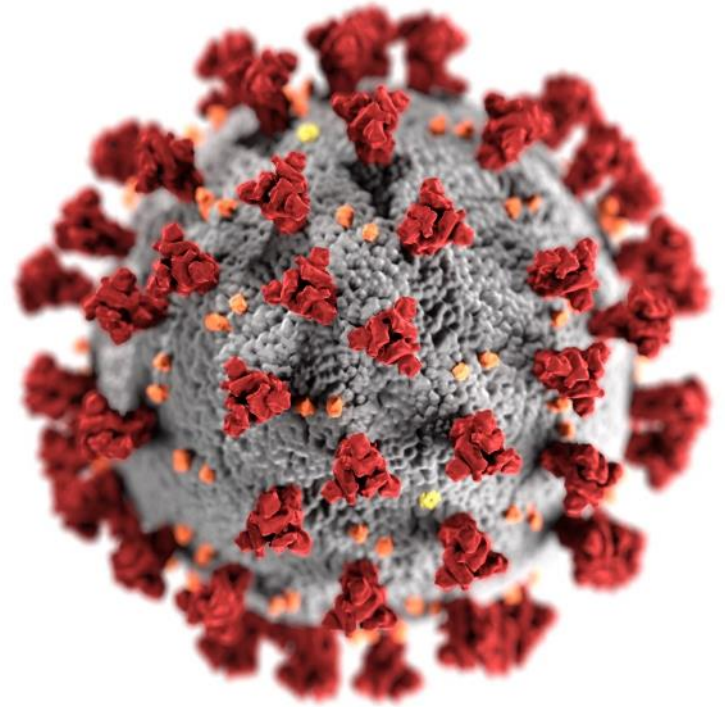
Managing Visitors who are Essential to the Care of Patients with COVID-19

- Assess visitors or caregivers to determine their health risks
- Provide education on PPE use, hand hygiene, physical distancing, and limiting surfaces touched
- Ensure the availability of adequate supplies of PPE and hand hygiene stations
 - Follow PPE contingency plans if a visitor is essential and PPE is not available
- Limit movement of visitors or caregivers within the healthcare facility
- Visitors or caregivers should not be present during aerosol generating procedures or during collection of respiratory specimens



References

- Centers for Disease Control and Prevention. Management of Visitors to Healthcare Facilities in the Context of COVID-19: Non-US Healthcare Settings. Available from: <https://www.cdc.gov/coronavirus/2019-ncov/hcp/non-us-settings/hcf-visitors.html>
- Centers for Disease Control and Prevention. Interim Infection Prevention and Control Recommendations for Patients with Suspected or Confirmed Coronavirus Disease 2019 (COVID-19) in Healthcare Settings. Available from: <https://www.cdc.gov/coronavirus/2019-ncov/hcp/infection-control-recommendations.html>
- World Health Organization. Infection prevention and control during health care when coronavirus disease (COVID-19) is suspected or confirmed. Available from: <https://www.who.int/publications/i/item/WHO-2019-nCoV-IPC-2020.4>
- World Health Organization. Infection prevention and control of epidemic- and pandemic-prone acute respiratory infections in health care. Available from: https://www.who.int/csr/bioriskreduction/infection_control/publication/en/
- World Health Organization. Rational use of personal protective equipment for coronavirus disease (COVID-19) and considerations during severe shortages. Available from: [https://www.who.int/publications/i/item/rational-use-of-personal-protective-equipment-for-coronavirus-disease-\(covid-19\)-and-considerations-during-severe-shortages](https://www.who.int/publications/i/item/rational-use-of-personal-protective-equipment-for-coronavirus-disease-(covid-19)-and-considerations-during-severe-shortages)
- World Health Organization. Advice on the use of masks in the context of COVID-19. Available from: [https://www.who.int/publications/i/item/advice-on-the-use-of-masks-in-the-community-during-home-care-and-in-healthcare-settings-in-the-context-of-the-novel-coronavirus-\(2019-ncov\)-outbreak](https://www.who.int/publications/i/item/advice-on-the-use-of-masks-in-the-community-during-home-care-and-in-healthcare-settings-in-the-context-of-the-novel-coronavirus-(2019-ncov)-outbreak)



For more information, contact CDC
1-800-CDC-INFO (232-4636)
TTY: 1-888-232-6348 www.cdc.gov

The findings and conclusions in this report are those of the authors and do not necessarily represent the official position of the Centers for Disease Control and Prevention.

