

# **Critical Care Aspects of COVID-19**

**The Ugly Tail End of COVID-19 Acute Respiratory  
Distress Syndrome?**

**Vikram Mukherjee, MD**

**Director, Medical ICU, Bellevue Hospital Center**

**Director, Special Pathogens Program, Bellevue Hospital Center**



## Case

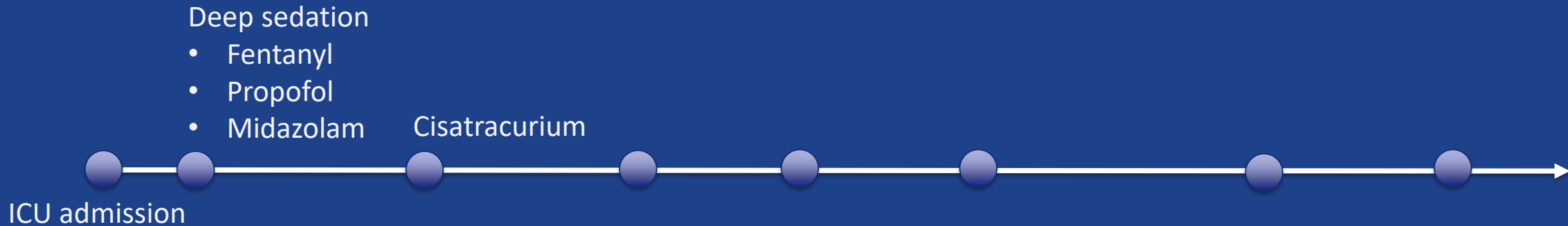
- 40 yo m
- No PMH
- COVID pneumonia
  - Severe ARDS
- Single organ dysfunction



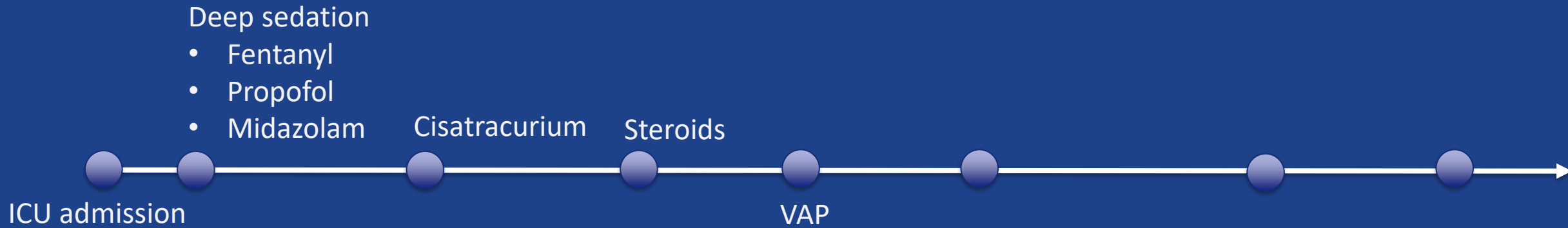
## Case



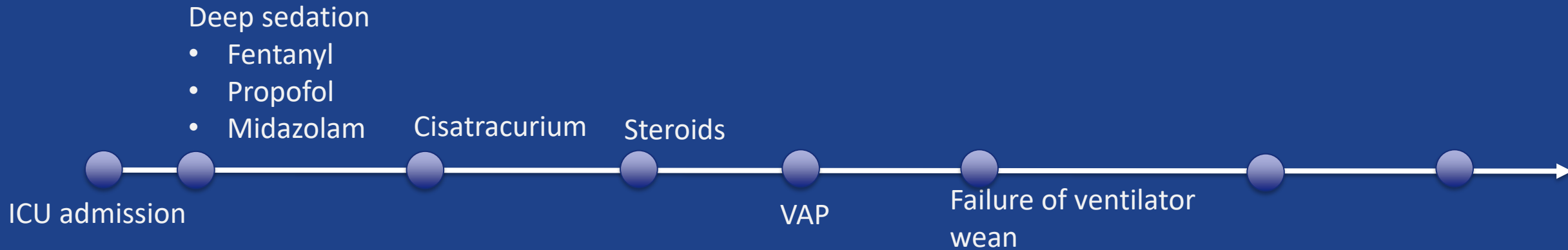
## Case



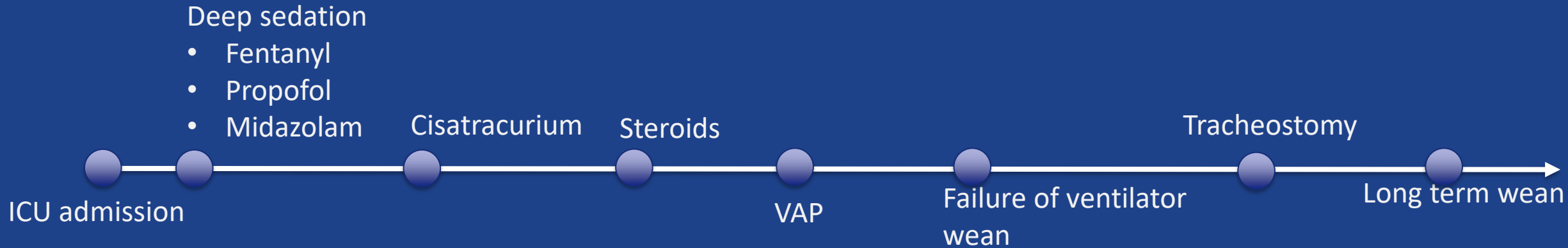
## Case



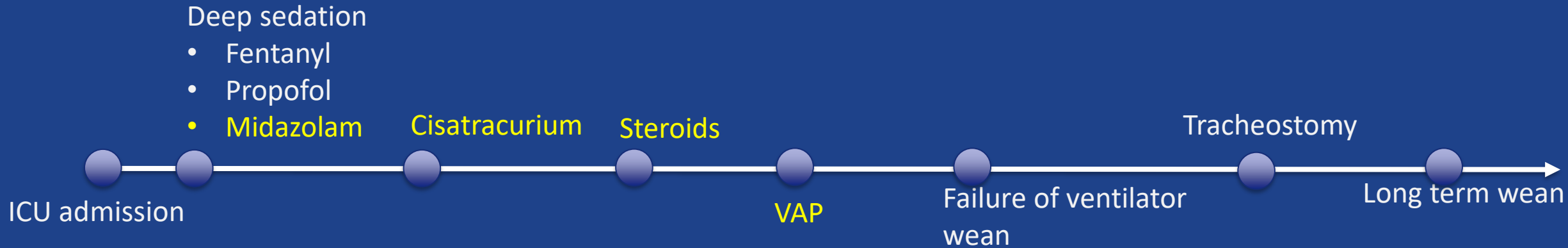
## Case



## Case



## Case





# Bellevue



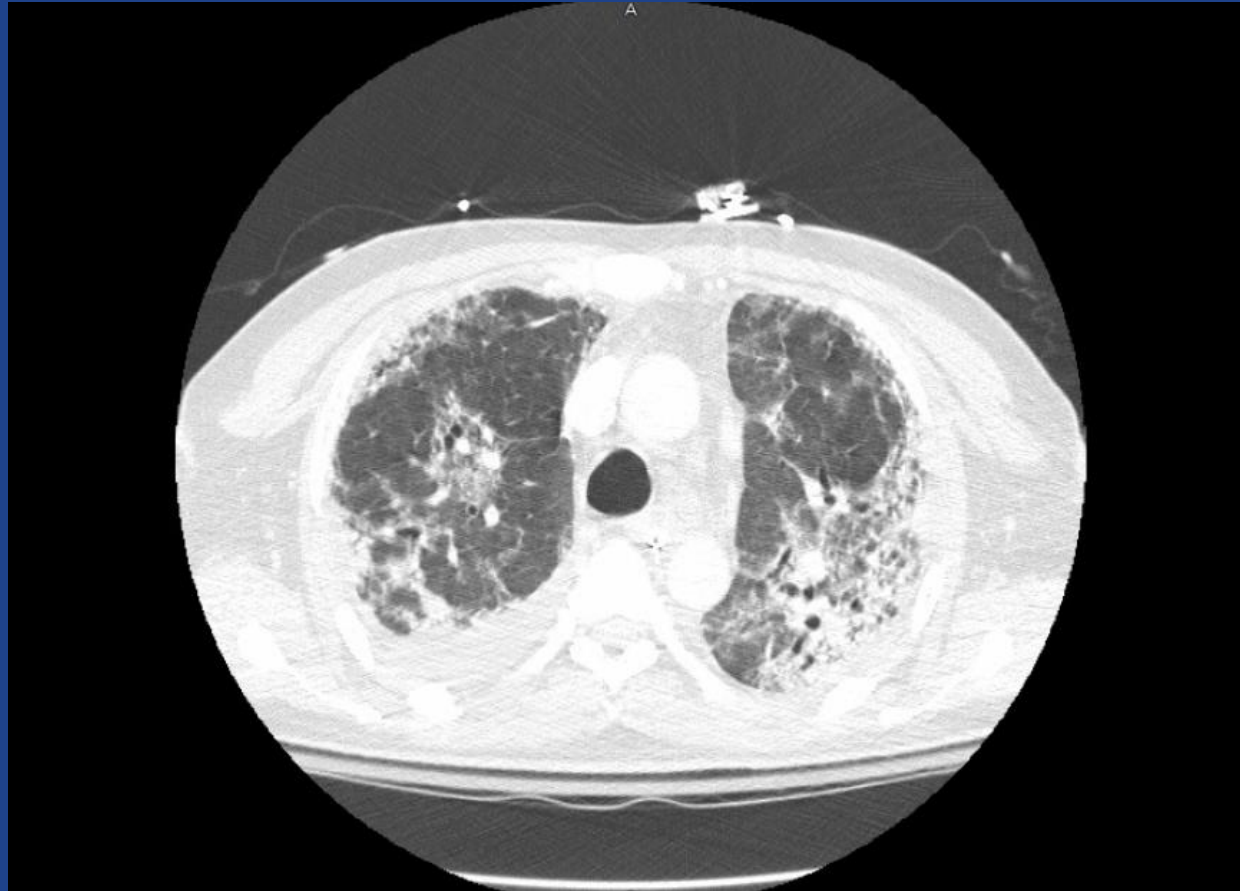
# Bellevue



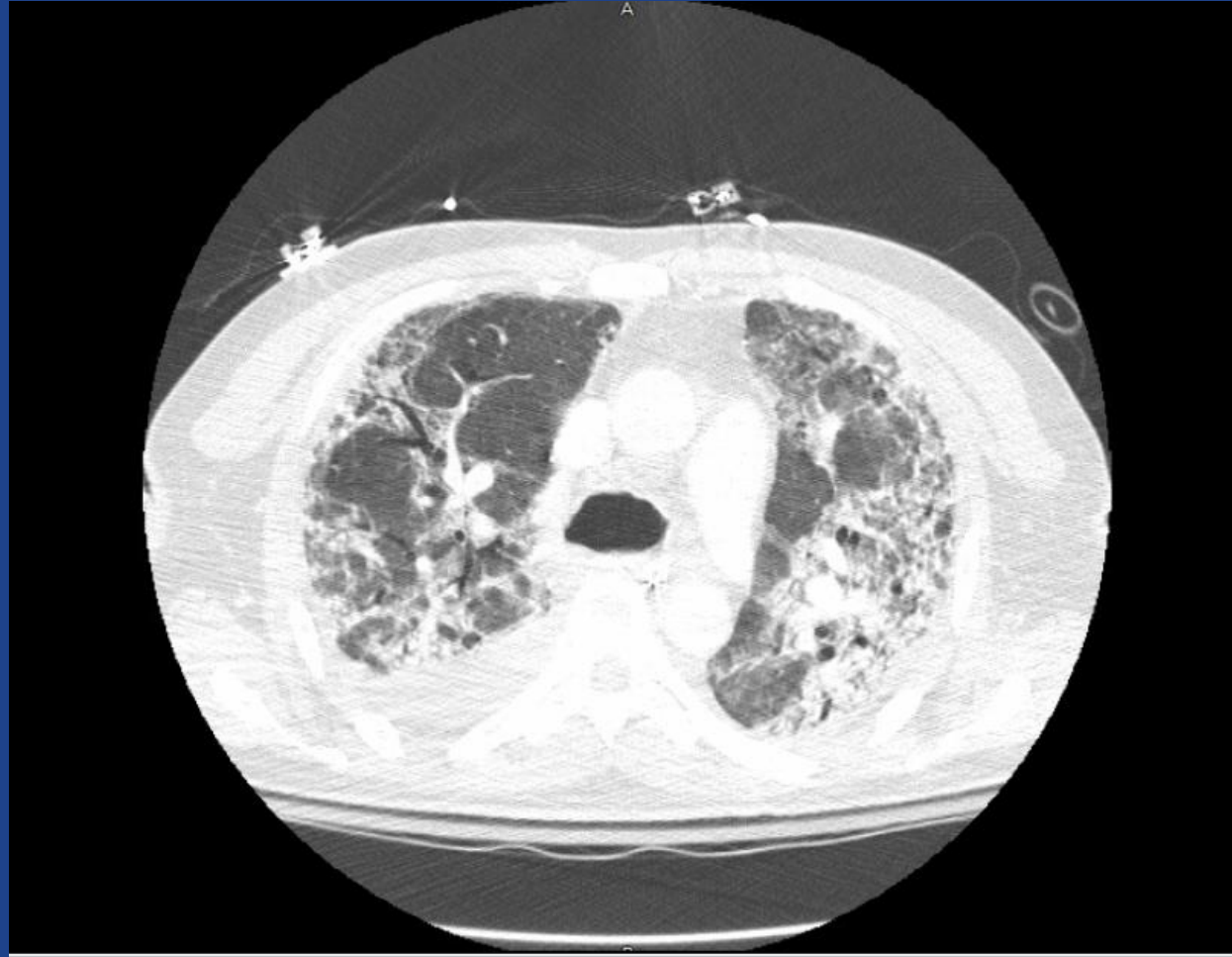
# Bellevue



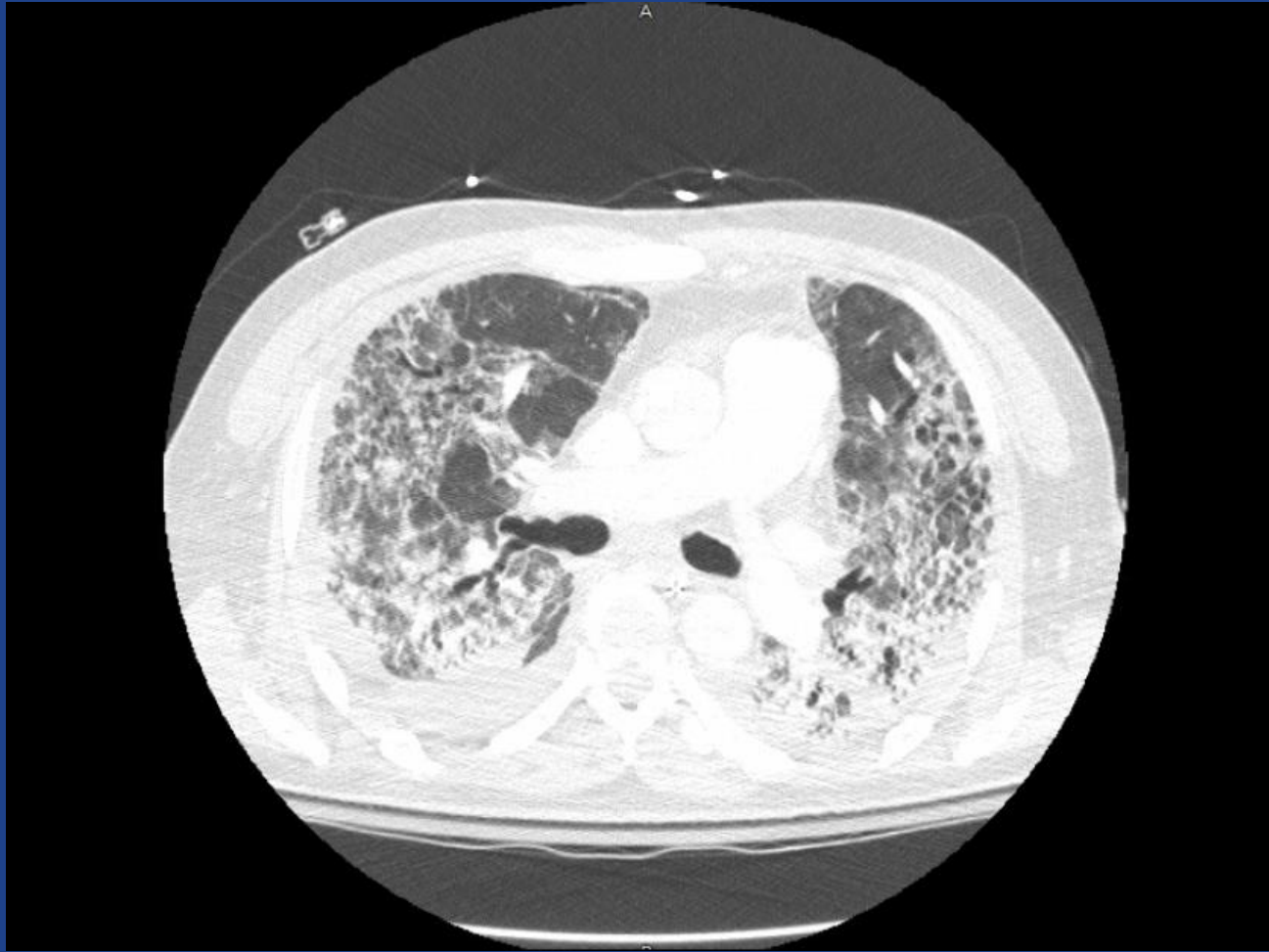
# Bellevue



# Bellevue



# Bellevue





# Bellevue



## Take home points

- Long term consequences of COVID ARDS
  - Consequences of medical care
  - Evolution of disease
- Long term critical care needs:
  - Ventilator weaning
  - PT/OT, nutrition, nursing care
- High risk for decompensation

