

COVID-19 Clinical Rounds:

Updates from Massachusetts General Hospital

Susan R. Wilcox, MD, FACEP, FCCM, FAAEM



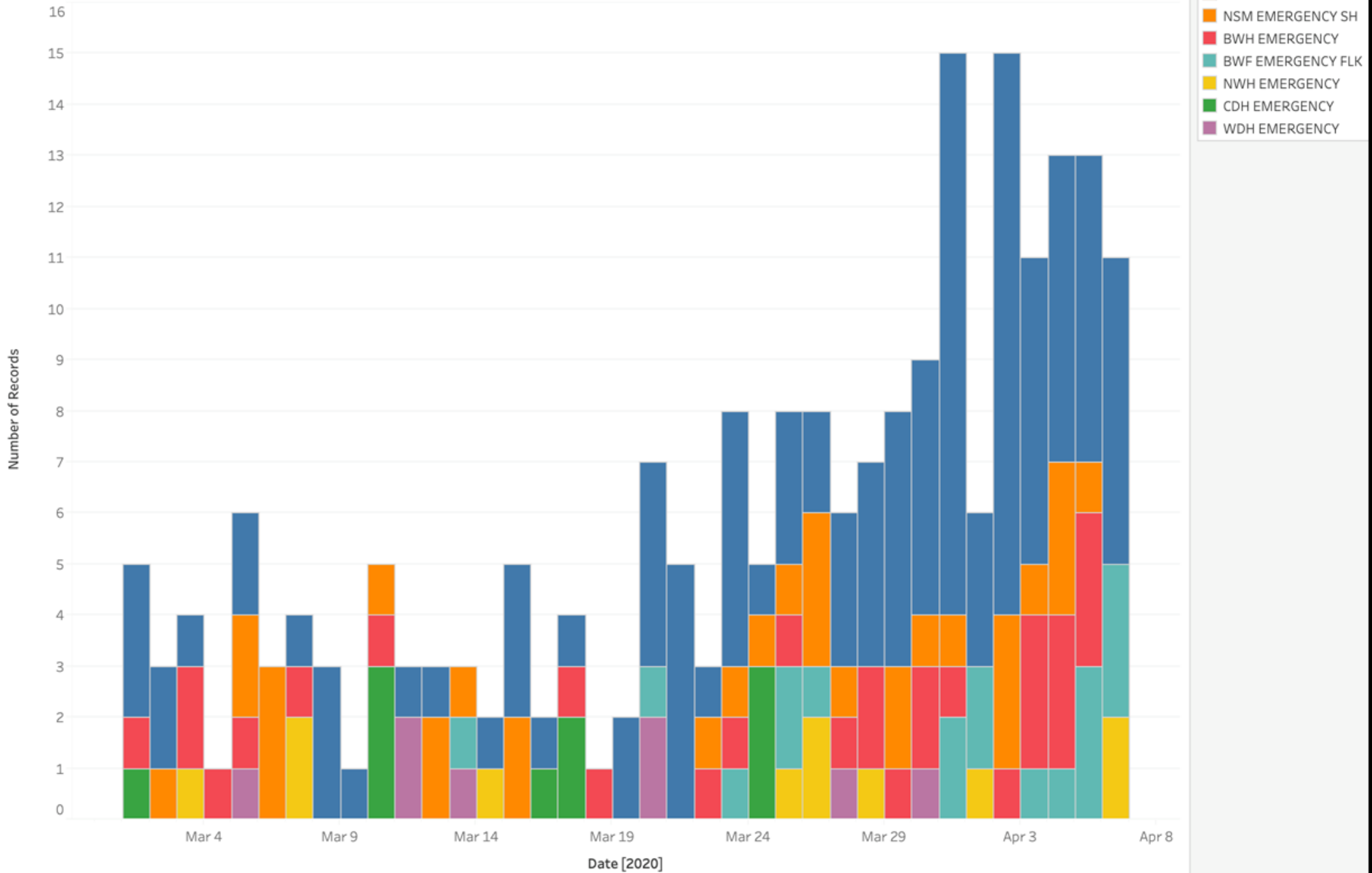
MASSACHUSETTS
GENERAL HOSPITAL

EMERGENCY MEDICINE

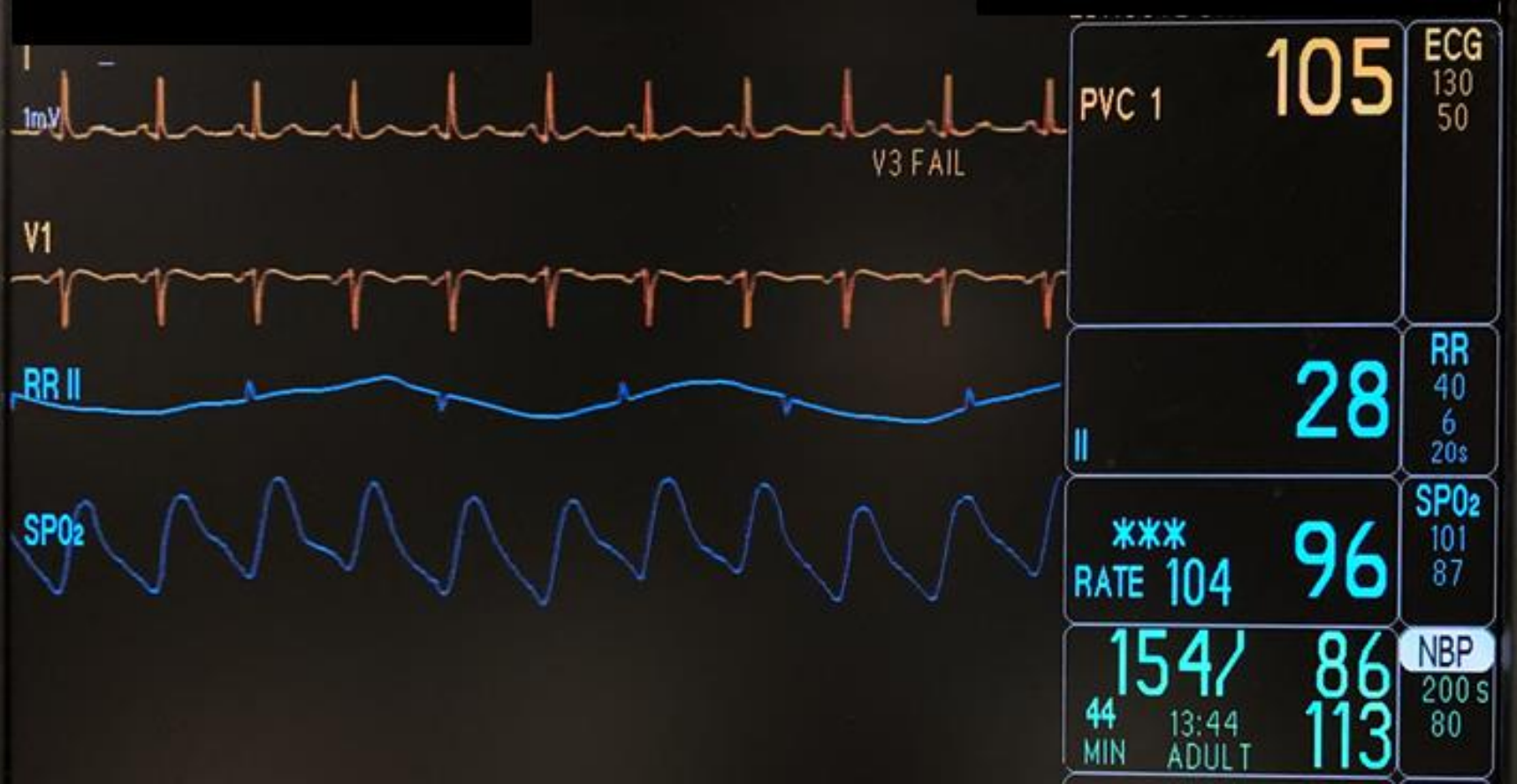
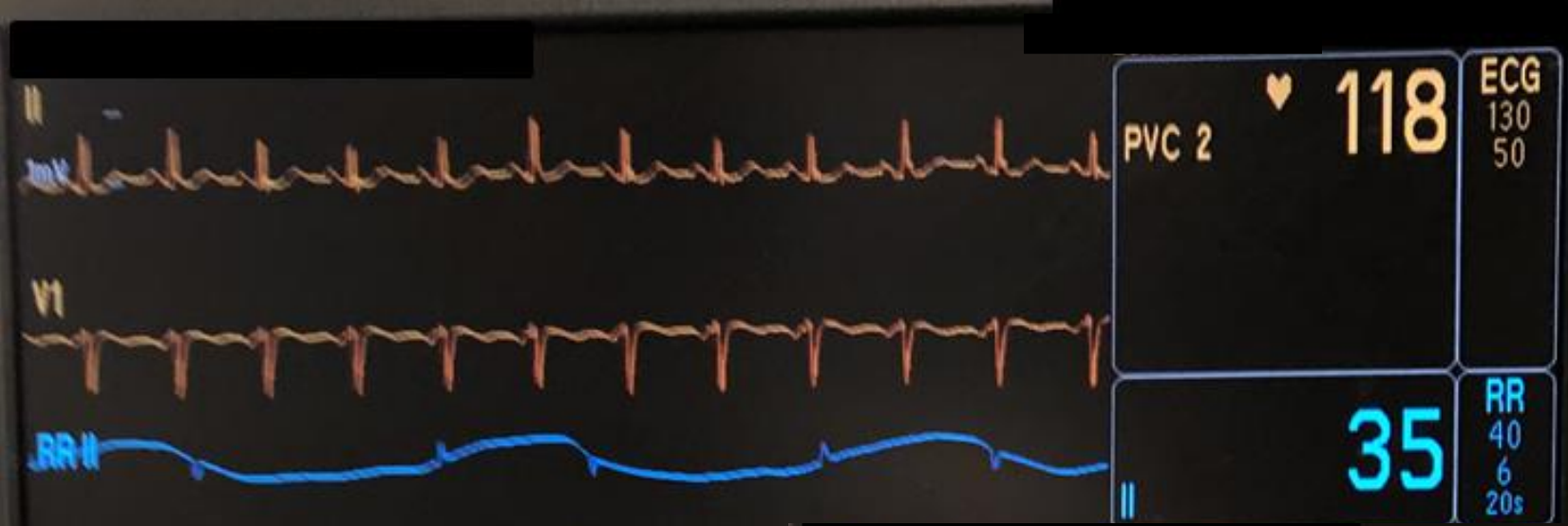


HARVARD
MEDICAL SCHOOL

Intubations (up to April 6)



Timing of / Indications for Intubation



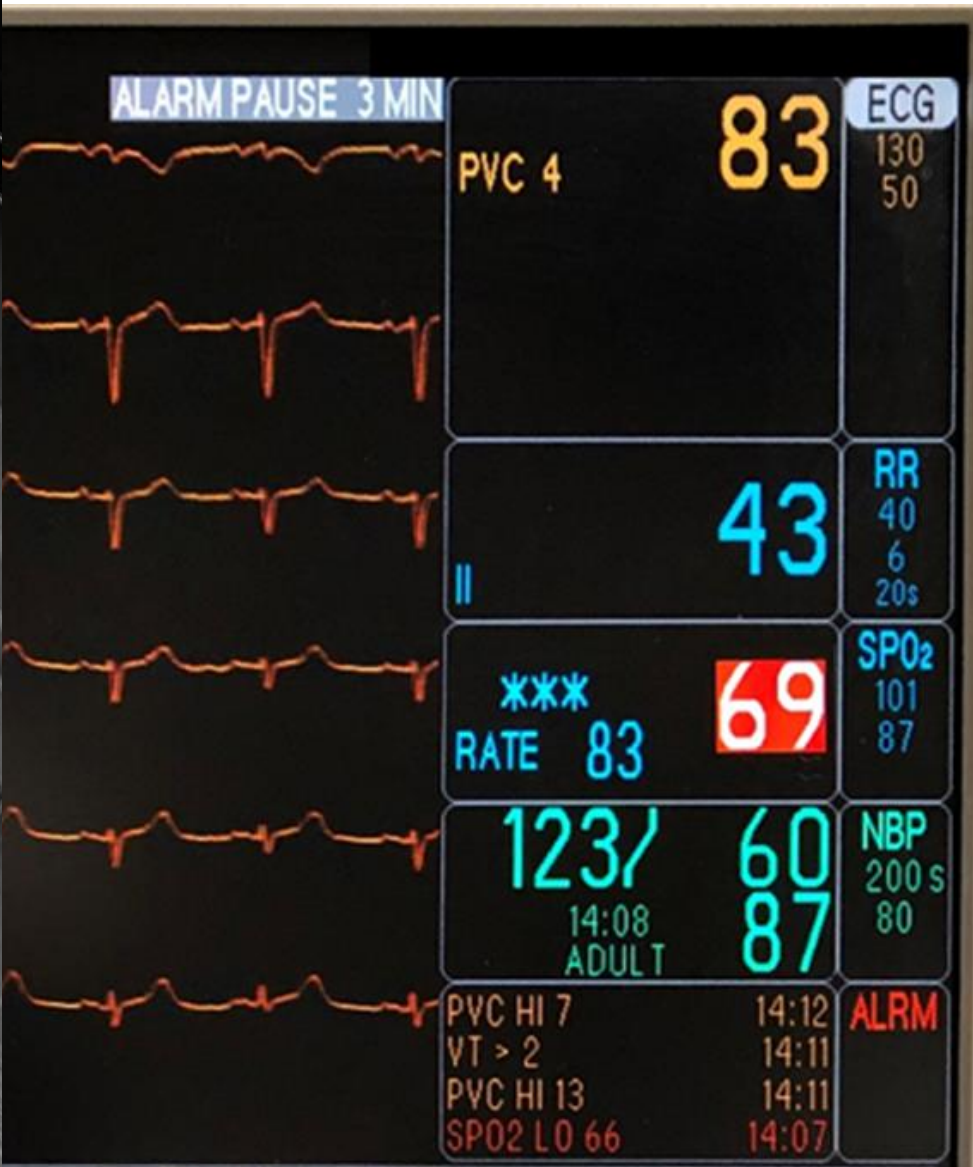
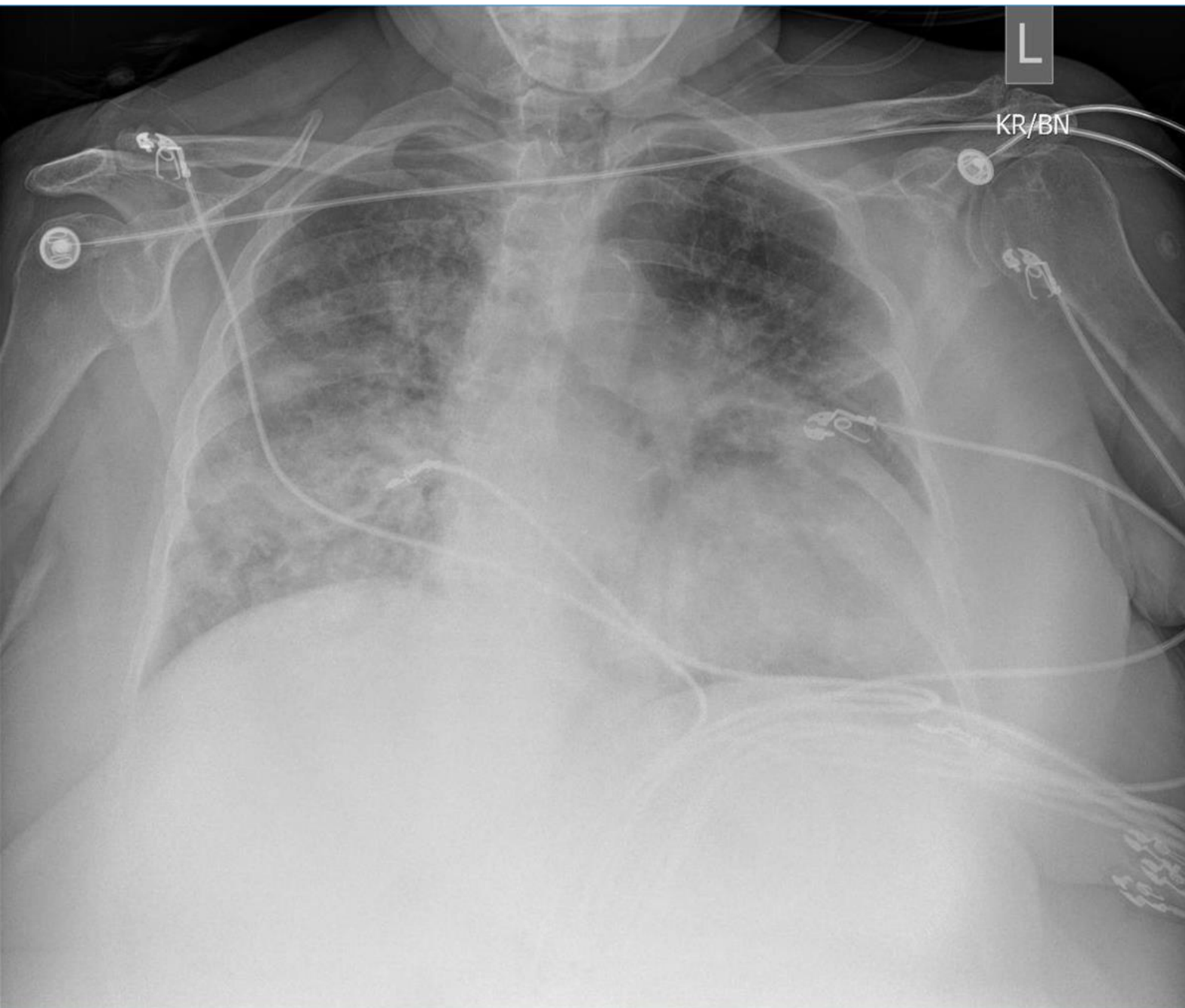
Self-proning in the ED

- Moderate hypoxemia, SpO₂ < 95% on supplemental O₂ or < 90% with exertion
- Tachypnea or mild-moderate dyspnea with supplemental O₂
- Rescue therapy

Contraindications:

- Delirium, confusion, or inability to follow staff instructions when given proper interpretive services
- Inability to independently change position
- Recent nausea or vomiting
- Hemodynamic lability, including but not limited to, heart rate > 120 or MAP < 65
- Need for immediate intubation





Palliative Care in the ED

- Available 7am – 6pm
 - Working on 24/7 coverage as needed
- Since March 23
 - 40-50 consults
- Goals of care
- In-depth family conversations
- Improved symptom management

