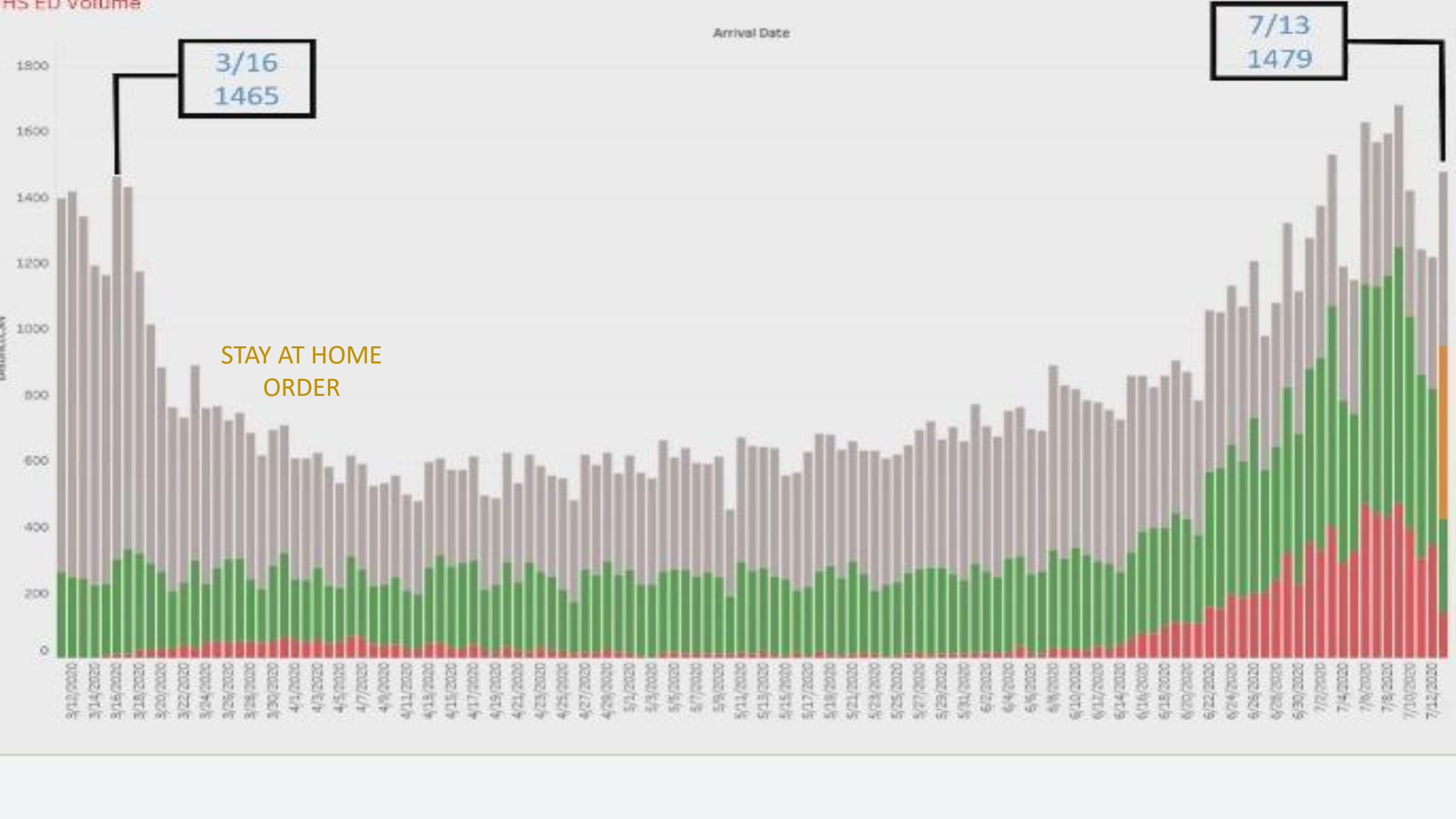


# Memorial Regional Hospital

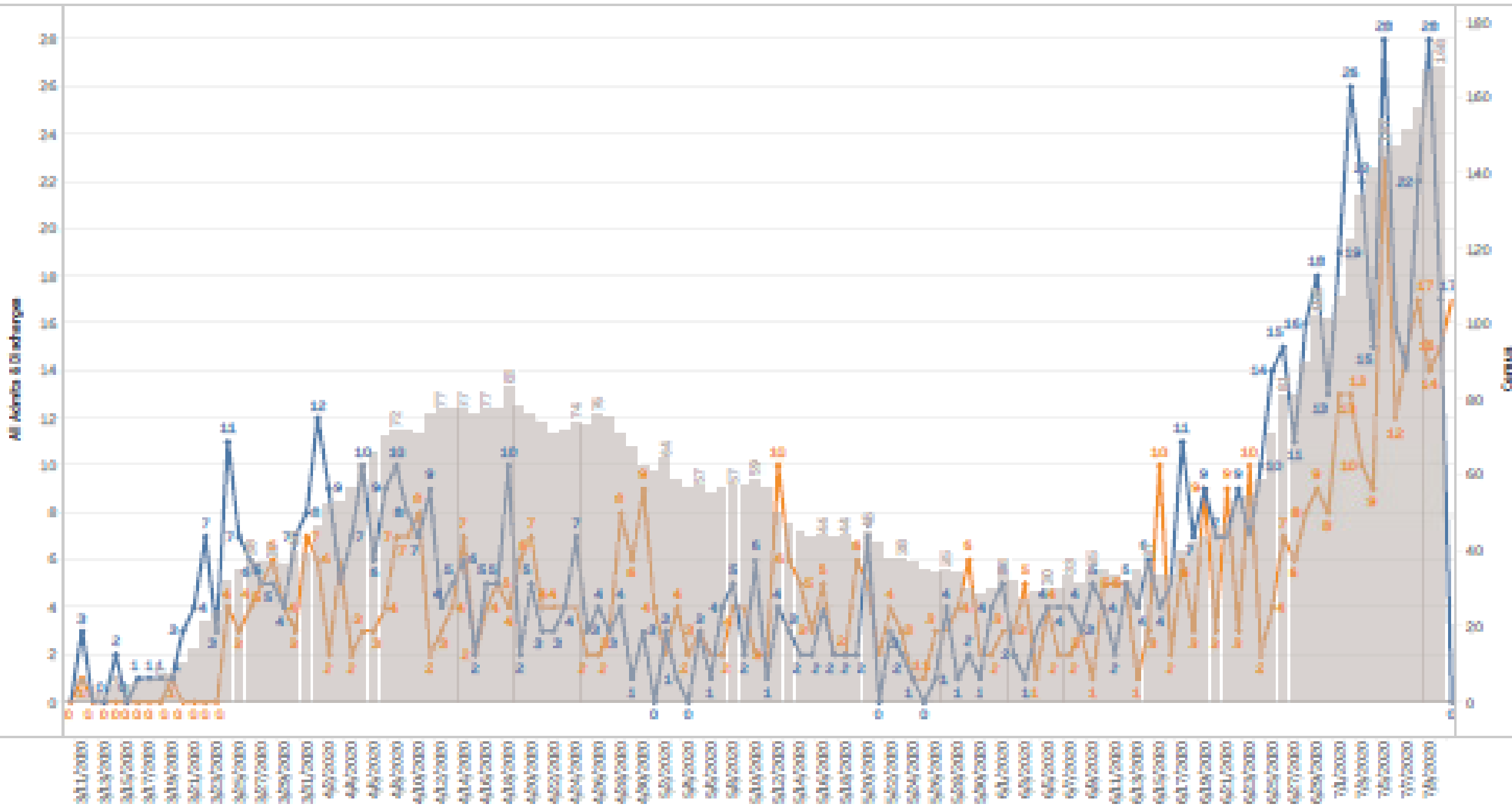
Hollywood, Florida

Randy S. Katz, D.O., FACEP

Chairman, Department of Emergency medicine



COVID19 Positive - IP + OBS patients (all admissions)



# CLINICAL MANAGEMENT

## *The Second Surge*

- Median age lower
- Ambulatory volume greatest increase (300%)
- ICU LOS and Mortality rates significantly improved
- ED physicians increased comfort level with “happy hypoxia”
- NC → NRB/NC → HFNC → Ventilator
- HFNC (Vapotherm/Optiflow) + Proning significantly reduced intubations

# CLINICAL CHALLENGES

## *The Second Surge*

- Admission guidelines:
  - High clinical suspicion
  - $O_2\% < 93$
  - CXR with bilateral infiltrates
  - Multiple co-morbidities (Obesity, HTN, DM, immunosuppressed or chronic lung disease)
- Plenty of ventilators but not enough HFNC devices
- Need more oxygen tanks than you think

# OPERATIONAL CHALLENGES

## *Second Surge*

- Manpower most important asset
  - Mental toll significant
  - Daily adjustments of responsibilities
  - COVID infections
- Demand for ambulatory testing – “The Tent”
- Hot zone and “warm zone” in ED
- PPE supply strain – use of elastomeric masks with P100 filters
- Leadership must be present

---

## MRH COVID-19 STATUS UPDATE

WEDNESDAY, 07/14/2020

---



There are **172** COVID+ patients;  
**24** in ICU (**18** ventilated); **3** ECMO

ED TO ADMIT VOLUME: **87**

OVERALL ED VOLUME: **383**

ED TENT VOLUME: **202**

Total Inpatient Census: **604**

Inpt/Obs MRH COVID-related discharges  
to date: **587**

\*Report reflects volumes for 7/14

