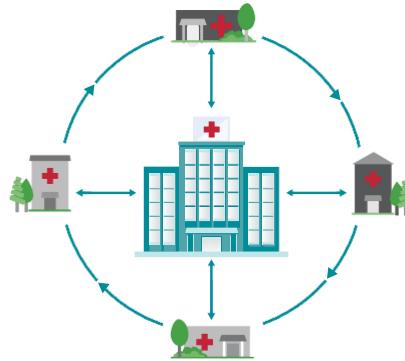


Moving Knowledge, Not Patients

Through telementoring, ECHO builds capacity and creates access to high-quality specialty care serving local communities.



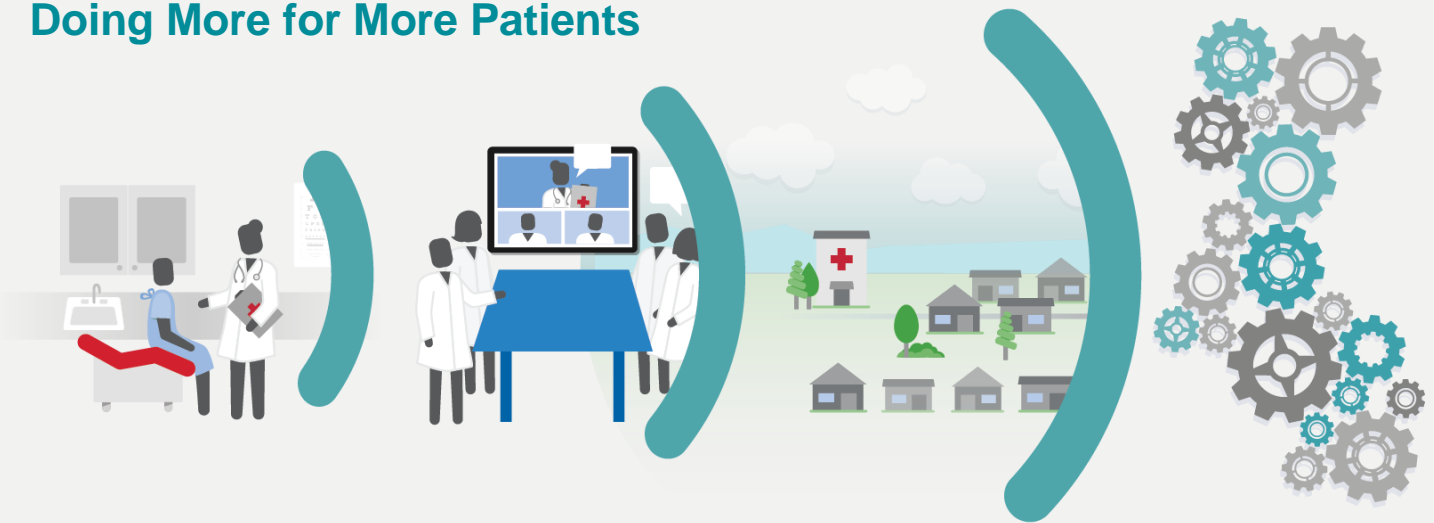
Hub and spoke knowledge-sharing networks create a learning loop:

Community providers learn from specialists.

Community providers learn from each other.

Specialists learn from community providers as best practices emerge.

Doing More for More Patients



PATIENT

- Right Care
- Right Place
- Right Time

PROVIDER

- Acquire New Knowledge
- Treat More Patients
- Build Community of Practice

COMMUNITY

- Reduce Disparities
- Retain Providers
- Keep Patients Local

SYSTEM

- Increase Access
- Improve Quality
- Reduce Cost

Changing the World, Fast

NEW MEXICO

- Operating more than 40+ teleECHO programs
- More than 400 community clinic sites

NATIONAL

- Operating in more than 30 states and growing
- More than 100 complex conditions

GLOBAL

- Operating in 31 countries and growing
- Goal of touching 1 billion lives by 2025